

# VA40E/41

High Performance Vision Appliances



VA40E/41

## Key Features

- Cost-effective multi-camera solution
- Choice of camera type and resolution
- Supports color or mono applications
- Fully equipped with industrial grade I/O
- Pre-installed applications for all levels of expertise

## Vision Capabilities

- Positioning
- Identification
- Verification
- Measurement
- Flaw Detection

## Overview

# High Performance Vision Appliances for Multi Camera Applications

DALSA's VA4X Vision Appliances are compact machine vision controllers for multiple camera automated inspection applications. These products have been designed to offer flexibility, speed and choice of camera to match the performance needs of end users and system integrators.

Multiple camera inputs provide excellent cost efficiency and easier integration for applications that require simultaneous inspection of different parts or part views. Camera resolution can be easily substituted to match changing application needs.

Each controller is equipped with industrial grade I/O that are broken out to removable screw terminal connectors. Serial communication options include RS-232, USB and Ethernet for connecting into the factory network. All physical connections are located on the rear panel, with status lights available on the front.

## Specifications

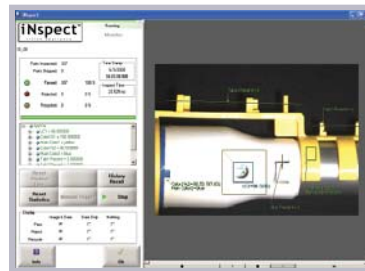
	VA40E	VA41
Program Memory	512 MB	1024 MB
Storage Memory	80 GB	80 GB
Image Size min.	640 x 480	640 x 480
Image Size max.	1600 x 1200	User defined
# Cameras	3 x Analog	3 x Analog 3 x IEEE 1394
Communication		
- Ethernet	10/100	10/100/1000
- USB	2 (2.0)	2 (2.0)
- Serial	RS-232	RS-232
- Visual	7 LEDs	7 LEDs
I/O	24V 8in/8out	24V 8in/8out
User Interface	iNspect/Sherlock	iNspect/Sherlock
Mono/Color Processing	Mono	Mono or Color
Power	24V @ 2.5A	24V @ 2.5A
Operating	0-40°C ambient, 5-90% humidity	0-45°C ambient, 5-90% humidity
Dimensions	7.6 x 20 x 21.5 cm	7.6 x 20 x 21.5 cm
Approvals	CE	CE

# VA40E/41

High Performance Vision Appliances

The VA4X controllers are pre-loaded with two distinct application interfaces to cater to the differing needs and experiences of end users. Each offer a comprehensive suite of tools and capabilities to satisfy a variety of applications and industries.

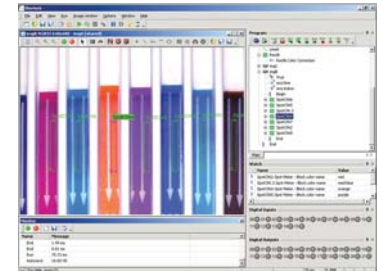
Both software interfaces support standard factory protocols, such as Modbus and Ethernet/IP, for connecting with complementary equipment.



### Designed for All Users

iNspec software allows users to setup and deploy vision solutions with little or no prior experience.

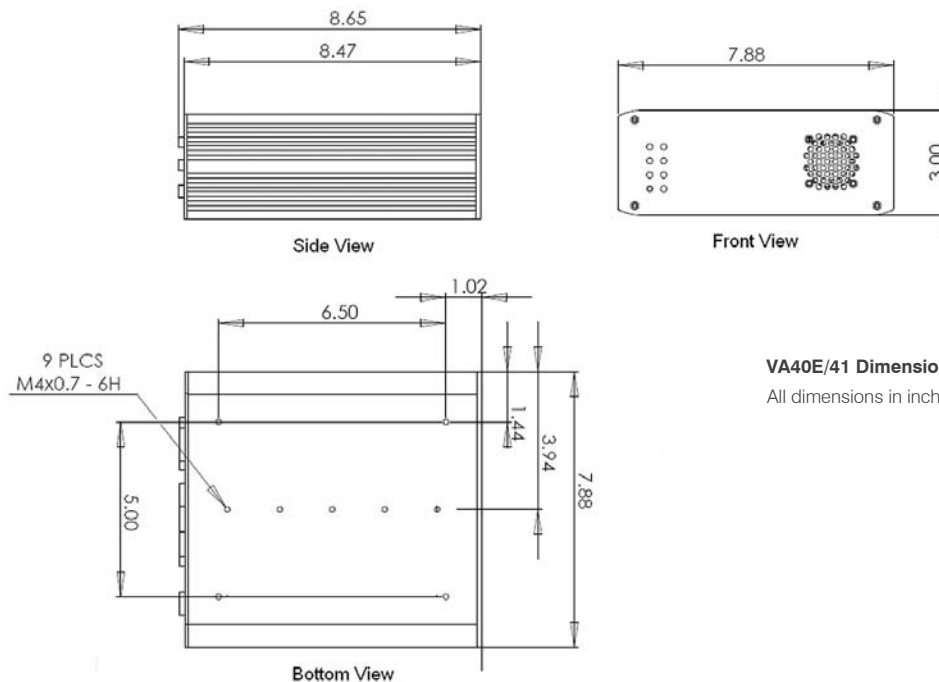
iNspec is available in various languages such as English, Chinese, French, German, Italian Japanese and Spanish.



### Designed for All Users

Sherlock software offers experienced integrators flexibility and advanced capabilities to tackle the most demanding applications.

Sherlock has been deployed in thousands of applications worldwide.



### VA40E/41 Dimensions

All dimensions in inches

[www.goipd.com](http://www.goipd.com)

#### Americas

Boston, USA  
Tel: +1 978-670-2002  
sales@goipd.com

#### Europe

Munich, Germany  
Tel: +49 8142-46770  
sales.europe@dalsa.com

#### Asia Pacific

Tokyo, Japan  
+81 3-5960-6353  
sales.asia@dalsa.com

DALSA is an international leader in digital imaging and semiconductors and has its corporate offices in Waterloo, Ontario, Canada.

All trademarks are registered by their respective companies. DALSA reserves the right to make changes at any time without notice. © DALSA 2008. ipd\_va4x\_072508

